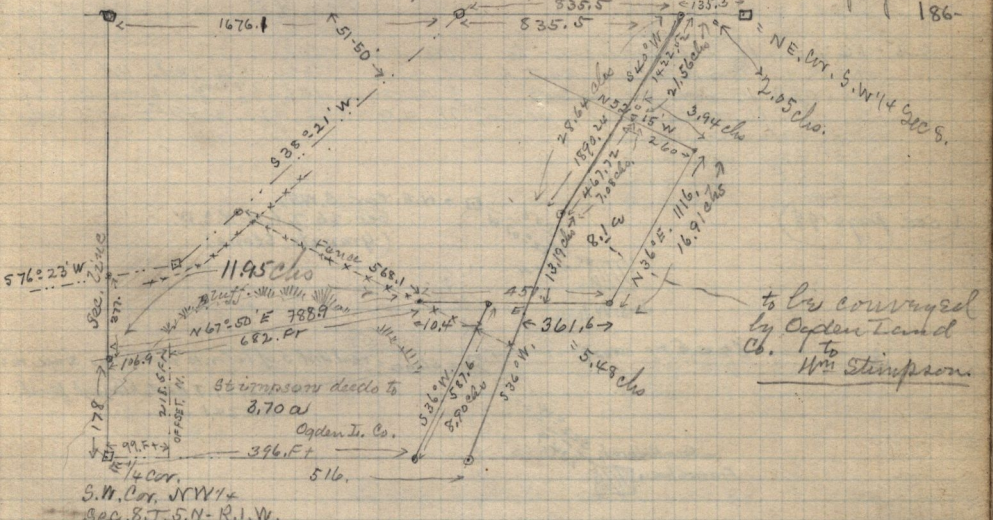


Description of the survey of the Marshall estate as surveyed
 Pt of N.W. 1/4 and Part of S.W. 1/4 of Sec. 20. T. 7. N. R. 1. E.
 Prop. at the N.E. Cor. of the S.W. 1/4 of said Sec., Running thence
 S 70. chs. to the S.E. Cor. of the N.E. 1/4 of the S.W. 1/4 of said Sec.
 thence N. 15. 23 chs. thence N. 52. 45 W. 16. 00 chs. N. 309 chs
 to W. line of N. E. 1/4 of S.W. 1/4 of said Sec., N 24. 00 chs. to the
 N.W. cor. of S.E. 1/4 of N.W. 1/4 of said Sec. E. 20. chs. to the
 1/4 Sec. line running N 43. 8 through said Sec., thence S.
 70. chs. to beg. containing 73.76 a This includes
 the school land in N.E. Cor. 1 acre. leaves 72.76 a rem.

4-285 Rudolph Van Dyk to Andrew Anderson among
 other lands Pt sec. 26, T. 5. N., R. 1. W., 13c., on N. line
 said Sec at a point 3.30 chs W. of N & S. center line
 of said Sec. E. on said N. line of said Sec. 11.01 chs
 S 17.94 chs. to point B. of B. to intersect land owned
 by J. Waldbrom W. 418. 0 ft on a line parallel with said
 line. N 15. 8 ft to center of N. in cut of S. 7.5 chs
 N 13. 0 E 14. 76 chs. to beg. 17. ch. Also Prop. at
 S.W. cor. of S.E. 1/4 of S.E. 1/4 Sec. 23. T. 5. N., R. 1. W. N 2. 50
 ft. S. 7. 71 chs. S 2. 50. ft W. 7. 71 chs to beg.

Jan. 22-1896.
 Survey of land for Ogden Land Co. and Wm Stimpson
 in N.W. 1/4 Sec. 8. T. 5. N. - R. 1. W. (no good) See also pages 176-177
 N. S. Browning, Wm Stimpson chain. 186



Prop. 2.05 chs N. and 21.56 chs S 40.0 W. from N. E. Cor. of N.W. 1/4 of
 Sec. 8. T. 5. N., R. 1. W. Running S 34.0 W 7.05 chs.
 S 36.0 W 13.19 chs. E 5.48 chs. N. 36.0 E. 16.91 chs N 52.15 W
 3.94 chs. to beg. 8.2 a. to be conveyed by O. L. Co. to
 Wm Stimpson.
 Prop. S.W. Cor. N.W. 1/4 Sec. 8. T. 5. N. R. 1. W. 6.00 chs. N 36.0 E. 8.90 chs. N. 0.15 chs.
 N. 11.95 chs to W. line 1/4. S. 2.70 chs to beg. 3.2 a.
 to be conveyed by Stimpson to O. L. Co.